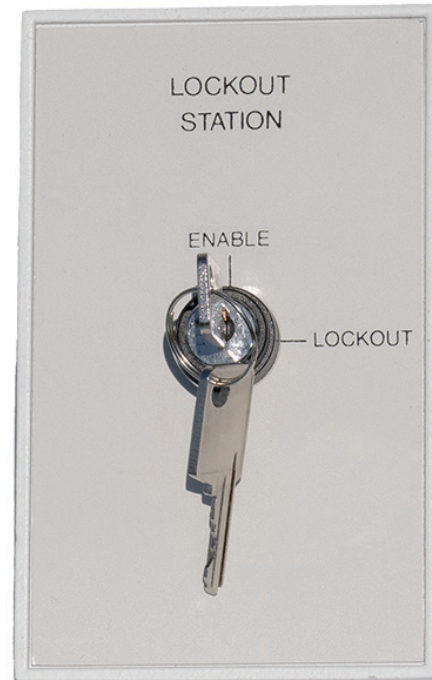


# VISION.NET KEYSWITCH STATIONS

Date: \_\_\_\_\_  
Type: \_\_\_\_\_  
Firm: \_\_\_\_\_  
Name: \_\_\_\_\_  
Project: \_\_\_\_\_

The Keyswitch Stations, which are available as a momentary (on/off) or toggled (active/lockout) switch, can be customized for various uses in the system such as but not limited to controlling external items via an AV interface or re-calling specific presets in the Vision.Net system..



- Station set up and configuration is simple
- Configuration software can upload and download station set-up data



VARI\*LITE

# Specifications

Due to continuous improvements and innovations, specifications may change without notice.

## Electrical

---

Supply Voltage	18-26VDC
Input Current	20mA

---

## Data

---

Vision.Net Sensor & Contact Closure connections	
	#18AWG bare end leads
*Vision.Net Sensor - pins 1 - 4, Contact Closure - pins 5 - 6	

---

## Installation

---

Mounting	Single Gang Box
----------	-----------------

---

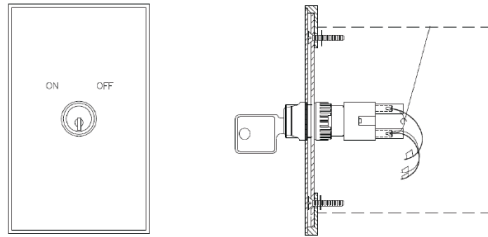
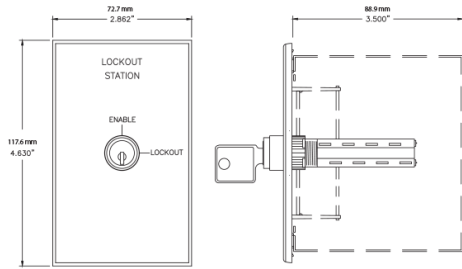
## Certification and Safety

---

Conformity	Conforms to EN60950, EMC: EN55032, CISPR 32
------------	---

---

# Dimensions



## Physical

Construction	Cold rolled steel, 18 gauge
Housing Color	Black
Dimensions (H x W x D)	117.6 x 2.70 x 88.9 mm (4.63 x 2.86 x 3.5 in)
Operating Temperature	0 - 40°C (32 - 104°F)
Storage Temperature	25 - 85 °C (77 - 185 °F)
Humidity	30-90% non-condensing

# Product and Accessories

<b>Product Name</b>	<b>Order Code</b>
VISION.NET KEYSWITCH STATIONS	
Vision.Net Keyswitch Station - On / Off (1 gang)	95131
Vision.Net Keyswitch Station - Active / Lockout (1 gang)	95148

<b>Accessories</b>	<b>Order Code</b>
Locking cover - 1 gang (bronze tinted plexiglass)	66701
Recessed backbox - 1 gang	66801
Surface mount bakcbox - 1 gang	2-069024-010

